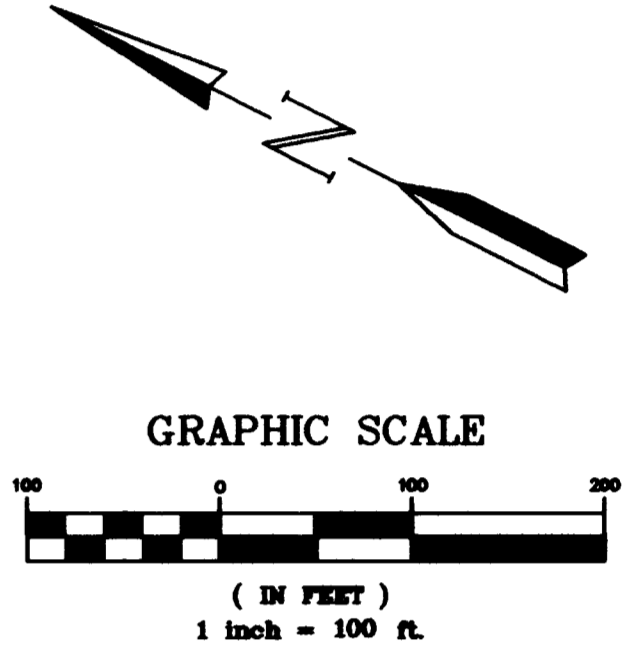
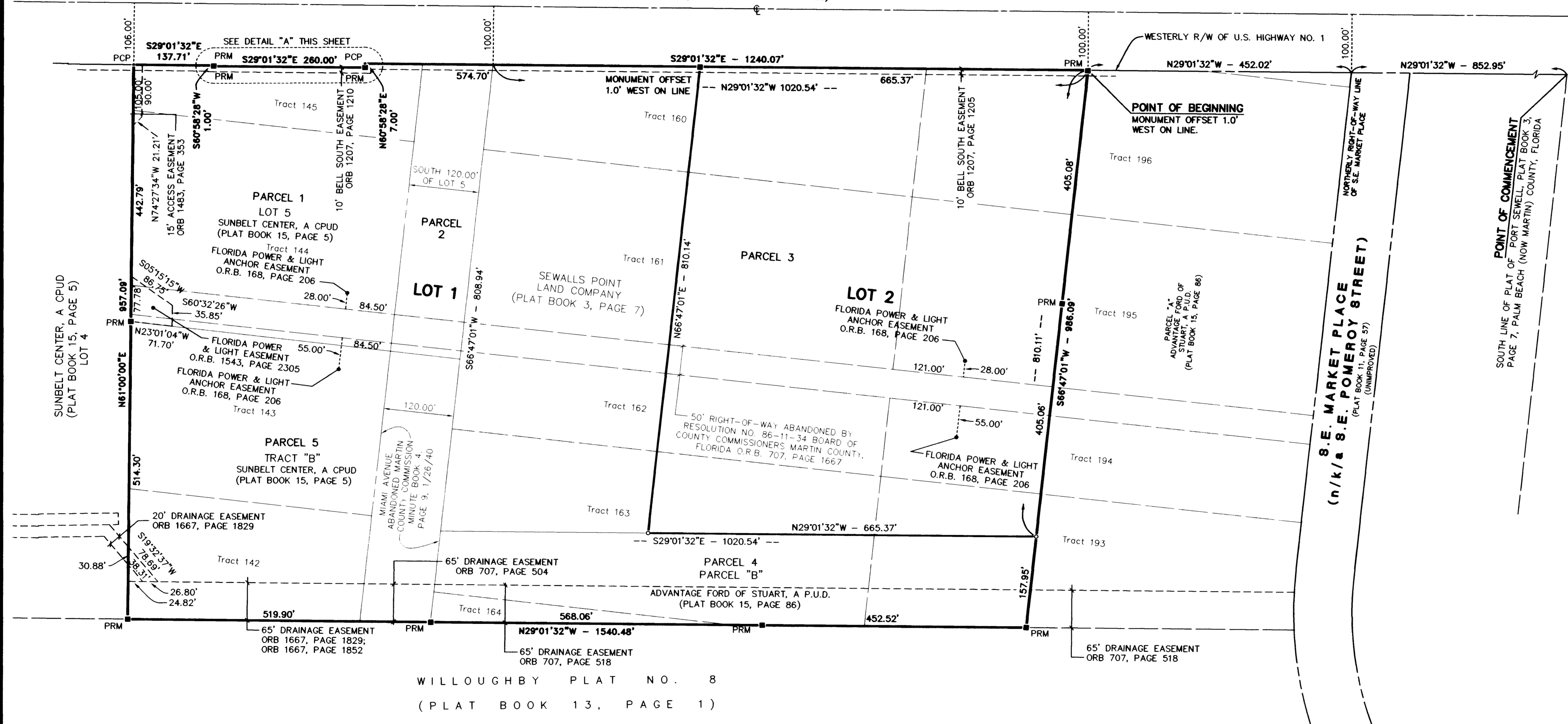


# Plat of Marketplace of Stuart, a CPUD

City of Stuart, Martin County, Florida

Being a replat of a portion of Tracts 160, 161, 162, 163, 164, 193, 194, 195, and 196 of the Plat of Port Sewall as recorded in Plat Book 3, Page 7, Public Records, Martin County, Florida and abandoned Miami Avenue, lying in the Hanson Grant, and Lot 5 and Tract "B" of Sunbelt Center, a CPUD as recorded in Plat Book 15, Page 5, Public Records of Martin County, Florida and Parcel "B" of the Plat of Advantage Ford of Stuart, a P.U.D. as recorded in Plat Book 15, Page 89, Public Records of Martin County, Florida.

U.S. HIGHWAY NO. 1  
(RIGHT-OF-WAY WIDTH VARIES)



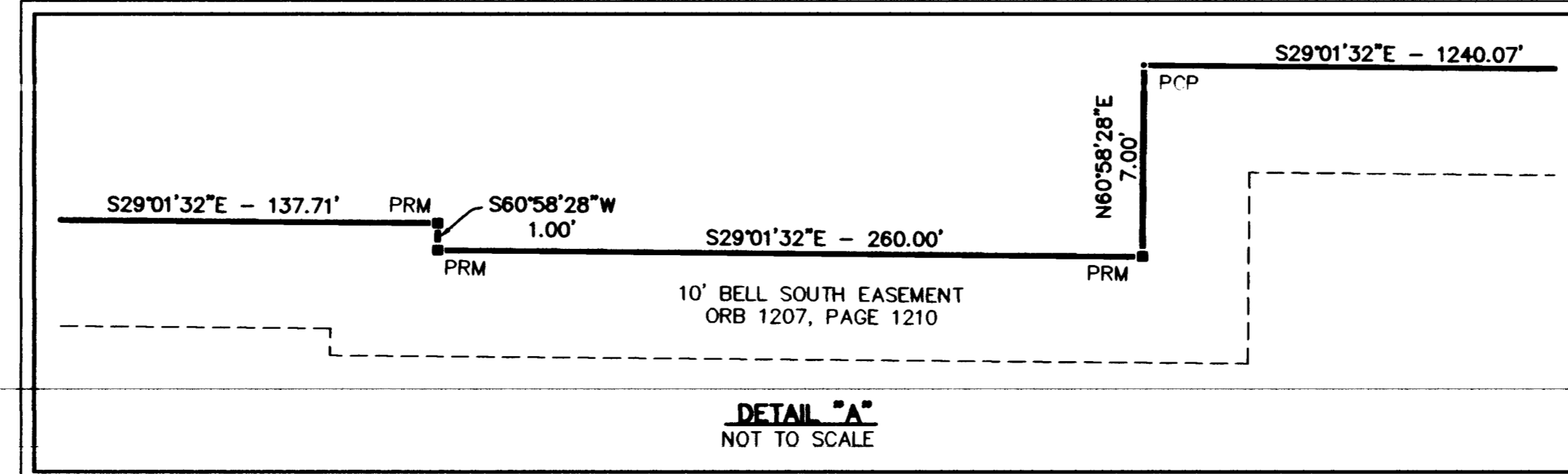
**LEGEND**

- = SET 3/4" IRON PIPE WITH YELLOW CAP LABELED "GCY, INC. LB 4108"
- = SET PERMANENT REFERENCE MONUMENT (PRM) 4"x4" CONCRETE MONUMENT WITH DISK LABELED "GCY INC. P.R.M. LB 4108, PSM 4864"
- D = DELTA (CENTRAL ANGLE)
- L = ARC LENGTH
- R = RADIUS
- CB = CHORD BEARING
- LB = SURVEYING AND MAPPING BUSINESS
- n/k/a = NOW KNOWN AS
- O.R.B. = OFFICIAL RECORD BOOK
- PRM = PERMANENT REFERENCE MONUMENT
- PSM = PROFESSIONAL SURVEYOR AND MAPPER
- P.C.P. = PERMANENT CONTROL POINT
- P.U.D. = PLANNED UNIT DEVELOPMENT
- CPUD = COMMERCIAL PLANNED UNIT DEVELOPMENT
- PG. = PAGE
- ± = PLUS OR MINUS
- ⊙ = CENTERLINE

WILLOUGHBY PLAT NO. 8  
(PLAT BOOK 13, PAGE 1)

**SURVEYOR'S NOTES**

- 1) THIS PLAT, AS RECORDED IN ITS ORIGINAL FORM IN THE PUBLIC RECORDS, IS THE OFFICIAL DEPICTION OF THE SUBDIVIDED LANDS DESCRIBED HEREON AND WILL IN NO CIRCUMSTANCES BE SUPPLANTED IN AUTHORITY BY ANY OTHER FORM OF THE PLAT, WHETHER GRAPHIC OR DIGITAL.
- 2) THERE MAY BE ADDITIONAL RESTRICTIONS THAT ARE NOT RECORDED ON THIS PLAT THAT MAY BE FOUND IN THE PUBLIC RECORDS OF THIS COUNTY.
- 3) BEARINGS SHOWN HEREON ARE REFERENCED TO THE WEST LINE OF U.S. HIGHWAY ONE, A 200 FOOT RIGHT-OF-WAY, PER FLORIDA DEPARTMENT OF TRANSPORTATION RIGHT-OF-WAY MAP SECTION 89010-2252. SAID LINE BEARS N29°01'32"W.



Job Number 11-1049-01  
Licensed Business #4108

**GCY**  
INCORPORATED  
PROFESSIONAL SURVEYORS AND MAPPERS  
CERTIFICATE OF AUTHORIZATION LB 4108

CORPORATE OFFICE: TALLAHASSEE OFFICE  
PO BOX 1488 • 1505 SW MARTIN HWY. 1979 MARYLAND CIRCLE  
PALM CITY, FL 34981 TALLAHASSEE, FL 32303  
(800) 386-1086 (904) 536-8465